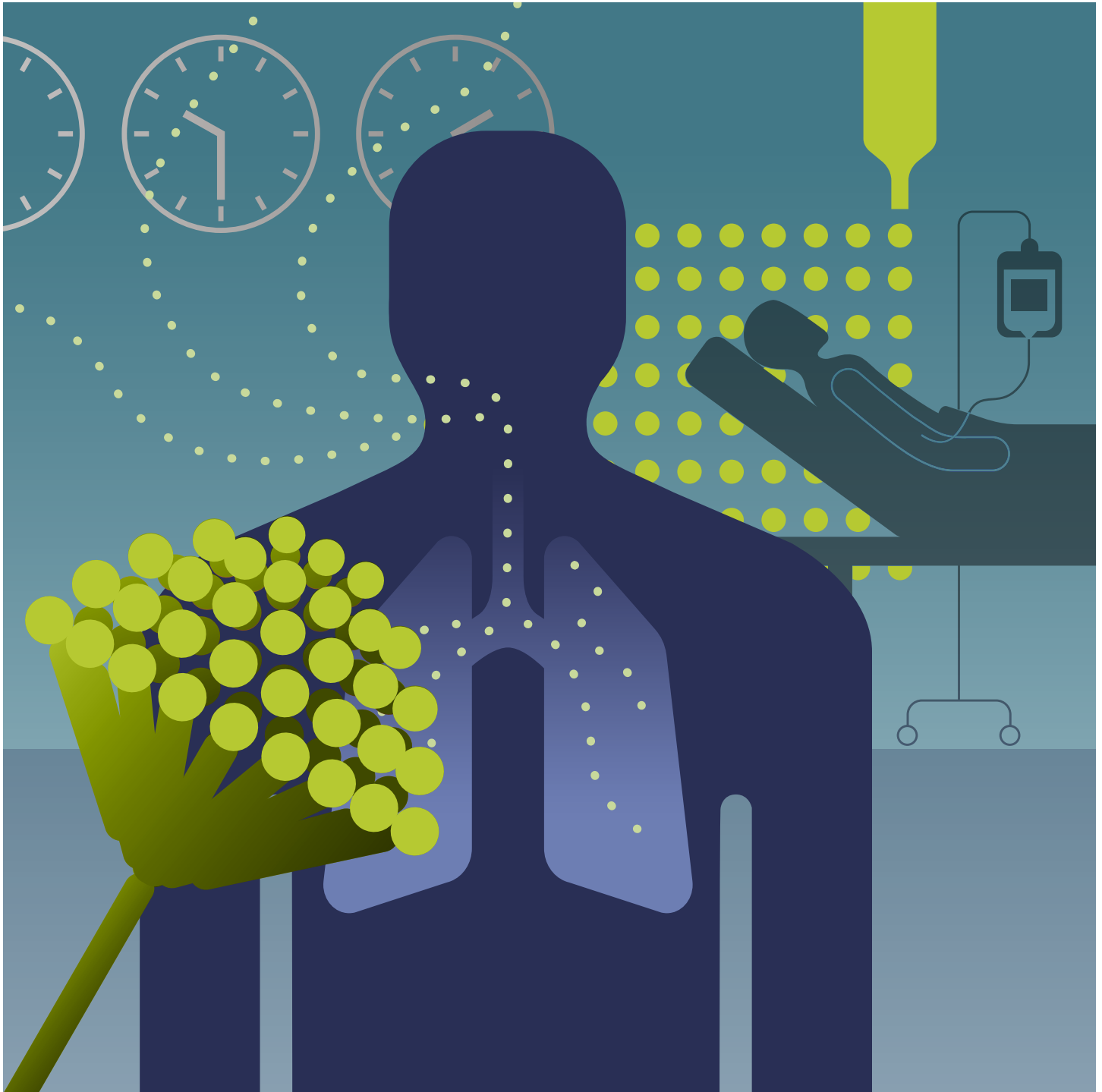


Platelia *Aspergillus* Ag Assay

EIA for screening, diagnosing, and monitoring invasive aspergillosis (IA) in high-risk patients



Unique, High-Performance *Platelia Aspergillus* Ag Assay



Immunosuppressed patients are at-risk populations for invasive fungal infections such as invasive aspergillosis (IA). Due to difficulties in diagnosing IA in a reliable and timely manner, the IA mortality rates are very high (for example, ranging from 70-93% in hematopoietic stem cell transplant recipients). Early diagnosis is critical for effective treatment and to avoid costly antifungal therapy.

Aids in High-Risk Patient Diagnosis

The *Platelia Aspergillus* Ag assay is a unique tool for screening, monitoring, and diagnosing invasive aspergillosis in high-risk patients including:

- Neutropenic hematological patients
- Non-neutropenic patients with hematological diseases
- Solid-organ transplant recipients and ICU patients

Platelia Aspergillus Ag Assay Benefits

- Standardized EIA format is easy to perform and interpret
- Results are reported as index values
- Microplate format (with breakable strips) is easily adaptable to each application

Gold standard assay for galactomannan detection in diagnosing invasive aspergillosis (IA)



The *Platelia Aspergillus* Ag Assay for galactomannan detection is both reliable and rapid.

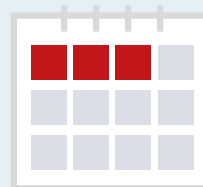


3 hrs

***Platelia Aspergillus* Ag Assay**

Results obtained within 3 hours

VS



several days

Traditional Mycological Tests

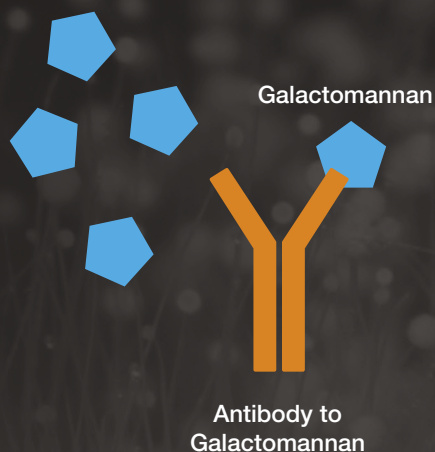
Results obtained within several days

Targeting Galactomannan

For diagnosing invasive aspergillosis (IA)

Through detection of the galactomannan antigen, the non-invasive Platelia *Aspergillus* Ag assay allows physicians to screen, diagnose, and monitor invasive aspergillosis in conjunction with other diagnostic procedures.

Located in the *Aspergillus* cell wall, galactomannan is considered a reliable marker for invasive aspergillosis disease because circulating galactomannan antigen (GM) is released during active invasive aspergillosis.



Screen



Diagnose



Monitor



Galactomannan Antigen

First Qualified Clinical Biomarker for IA

Defined by the EORTC/MSG Consensus Group

Galactomannan antigen detection using the Platelia *Aspergillus* Ag assay is among the mycological criteria defined by the EORTC/MSG Consensus Group.

Galactomannan Draft Guidance

In 2014, the FDA Center for Drug Evaluation and Research (CDER) approved galactomannan antigen (GM) testing by Platelia *Aspergillus* Ag as the first clinical biomarker qualified through the Biomarker Qualification Program.

Platelia *Aspergillus* Ag Assay for invasive aspergillosis detection

Validated on serum and bronchoalveolar lavage (BAL) fluid specimens for adult patients and serum for pediatric patients.

Convenient

- 96-well microplate with breakable strips
- Ready-to-use, colored reagents (diluent, calibrators, conjugate, chromogen)

Secured

Visual control of sample dilution and reagent deposit

Objective

Provides semi-quantitative results (galactomannan index values)

Rapid

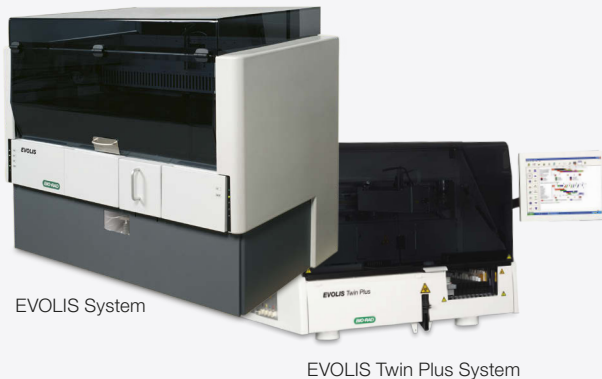
Features rapid turnaround time (3 hours) compared with several days using conventional methods)

Reliable

- Excellent sensitivity and specificity from oncohematology adult samples
- Faster initiation of appropriate treatment and monitoring of effectiveness

Recommended Testing Systems

The Bio-Rad fully automated EVOLIS systems or stand-alone systems (IPS/PR4100/PW40) are recommended instruments for testing with the Platelia *Aspergillus* Ag assay.



Complementary Assays

The Platelia *Aspergillus* Ag assay is a noninvasive method that improves the rapid and specific diagnosis of invasive aspergillosis (IA) when used in conjunction with other diagnostic procedures. The Bio-Rad EIA offer with Platelia *Candida* Ag Plus, Platelia *Candida* Ab Plus, and Platelia *Aspergillus* Ag assays is a reliable solution for detection at the right time during main invasive fungal infections.



Contact your Bio-Rad representative to learn more about our Platelia *Aspergillus* Ag Assay, testing instruments, and world class technical support.

Visit bio-rad.com/diagnostics for more information.

Ordering Information

| Catalog No. | Description | |
|-------------|--|-------------|
| 62794 | Platelia <i>Aspergillus</i> Ag. | 96 tests |
| 62792 | Platelia <i>Aspergillus</i> Proficiency Panel. | 3 x 6 tests |

BIO-RAD is a trademark of Bio-Rad Laboratories, Inc. in certain jurisdictions.
 PLATELIA and EVOLIS are trademarks of Bio-Rad Europe, GmbH in certain jurisdictions.



Clinical
 Diagnostics Group

Website www.bio-rad.com/diagnostics **Australia** +61 (2) 9914 2800 **Austria** +43 (0) 1 877 89 01 9 **Belgium** +32 (0) 3 710 53 00 **Brazil** +55 11 3065 7550
Canada +1 514 334 4372 **China** +86 21 6169 8500 **Czech Republic** +420 241 431 660 **Denmark** +45 44 52 10 00 **Finland** +358 9 804 22 00
France +33 (0)1 47 95 60 00 **Germany** +49 (0) 89 31884 393 **Greece** +30 210 7774396 **Hong Kong** +85 2 2789 3300 **Hungary** +36 1 459 6190
India +91 124 4029300 **Israel** +972 03 963 6025 **Italy** +39 024 94 86 600 **Japan** +81 3 6361 7070 **Korea** +82 080 007 7373 **Mexico** +52 (55) 5488 7670
The Netherlands +31 (0)318 540 666 **New Zealand** +64 (9)415 2280 **Norway** +47 23 38 41 30 **Poland** +48 22 331 99 99 **Portugal** +351 21 47 27 700
Russia +7 495 721 1404 **Singapore** +65 6415 3170 **South Africa** +27 11 442 8508 **Spain** +34 91 490 6580 **Sweden** +46 844 98053
Switzerland +41 (0) 61 717 9555 **Taiwan** +886 (2) 2578-7189 **Thailand** (662) 651 8311 **United Kingdom** +44(0)1923 471301